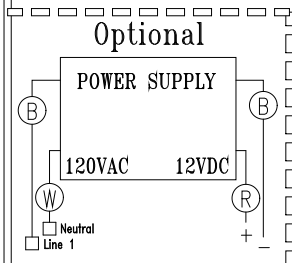
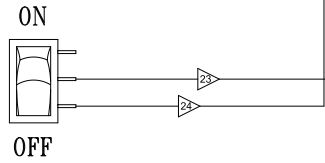
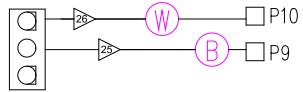


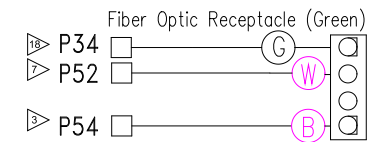
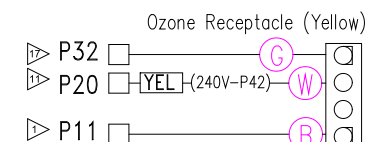
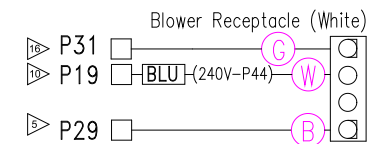
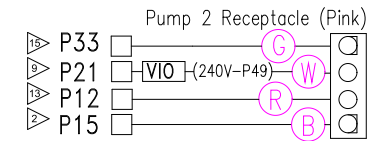
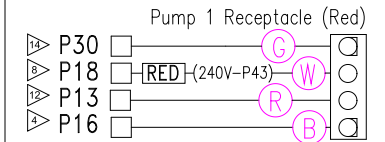
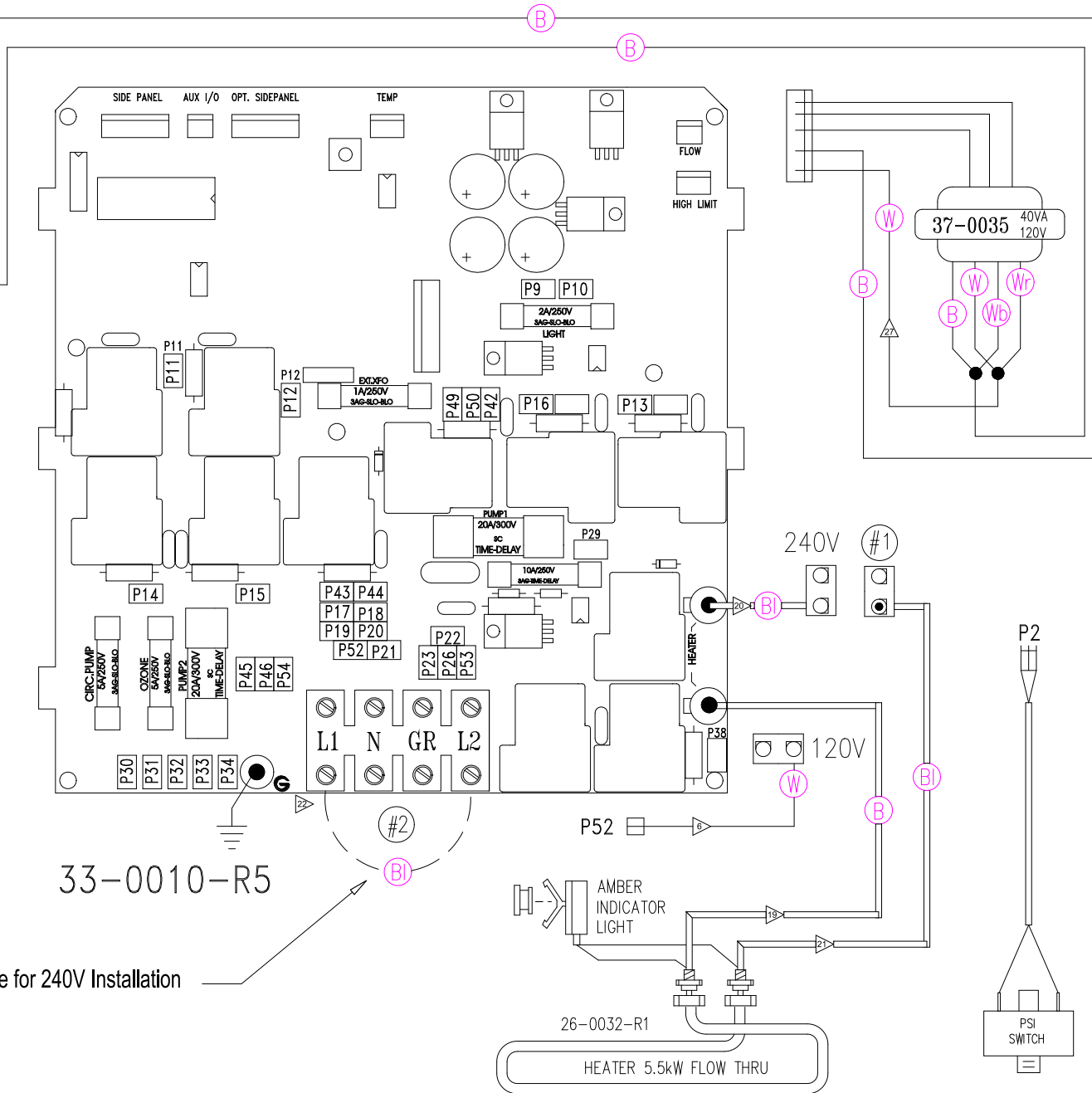
Light Receptacle



LEGEND	
	- 1/4" QUICK CONNECT
	- 1/4" PIGGYBACK
	- FORK CONNECTOR
	- RING CONNECTOR
	- SOCKET CONNECTOR
	- PIN CONNECTOR

Remove for 240V Installation

33-0010-R5



HYDRO-QUIP
CORONA, CA (909) 273-7575

Manufacture Notes: EX: **RED** - DENOTES THE COLOR OF HEAT SHRINK USED.

Approved By:

Dwg. No. **C5S56A0-DKMPQY8-Z7**

Drawn
BH

Rev
4

Wire Color Code

For 120V Operation:

- Install Heater plug (#1) into receptacle labeled 120V
- Jumper (#2) must be installed on all 120V installations

For 240V Operation:

- Separate Lines 1 & 2 (Remove Jumper #2)
- Install Heater plug (#1) into receptacle labeled 240V

Date
08.07.01

Diagram No. **4422**

B - Black	G - Green
Br - Brown	Bl - Blue
R - Red	V - Violet
O - Orange	W - White
Y - Yellow	Gr - Gray